



WOMEN JOGGING PANTS  
**STELLA TRACER DENIM**



STBW312

**The women's denim jogger pants**

Terry Jogger Pants  
 85% Organic ring-spun combed cotton, 15% Recycled polyester  
 300 GSM

- Self fabric waistband
- Round drawcords in matching body colour with metal tipping
- Metal eyelets
- Pocket lining in single jersey
- Patch pocket at back
- 1x1 rib at bottom leg hem
- Waistband, pocket opening, and leg cuff with twin needle topstitch
- Faded look on all seams due to garment washing
- Indigo yarn dyed product, each garment may vary in appearance, colour may bleed, follow our care label
- Read carefully print recommendations

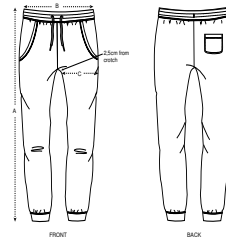
COLORS



FITTED

	XS	S	M	L	XL
--	----	---	---	---	----

Size guide



SIZES	XS	S	M	L	XL
A Waist	38	40	42.5	45	47.5
B Leg Length	96	98	100	101	102
C Tight	25.8	26.5	27.5	29	30.5

Combo options



Cruiser Denim

Stanley Stepper Denim

Printing Specifications

Wash and dry separately, colour bleeds. Fits all kinds of print techniques. Please download our printing guide for details.

This garment is an indigo dyed item.

Each garment may vary in appearance.

Denim washed effect will become stronger over time. Colour may transfer by rubbing onto light coloured materials.

Use mild detergent which contains no bleach.



**STANLEY/STELLA**

