



The unisex polo long sleeve

Medium Fit

XXS 3XL

240 GSM

Details

- Set-in sleeve
- Flat knit rib on collar
- Inside heavy single jersey back neck tape
- Front placket with 2 buttons in matching body colour
- Slit at side seams with heavy single jersey facing
- Single needle topstitch at shoulder seams
- 1x1 rib at sleeve hem
- Bottom hem with narrow double needle topstitch

Composition

Shell - Piqué
 100% Cotton - Organic Ring Spun Combed - 240 GSM
 Panel washed

Care

Wash similar colours together, no ironing on print, wash and iron inside out.



Country of origin

Weaving : Bangladesh
 Dyeing : Bangladesh
 Assembly : Bangladesh



Whites



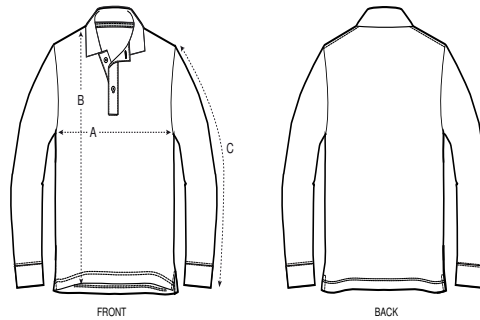
Colors



Essential Heathers



Size Guide



| Sizes | | XXS | XS | S | M | L | XL | XXL | 3XL |
|-------|---------------|------|------|------|------|------|------|------|------|
| A | Half Chest | 45.5 | 47.5 | 50.5 | 53.5 | 56.5 | 59.5 | 63.5 | 67.5 |
| B | Body Length | 64 | 68 | 70 | 72 | 74 | 76 | 78 | 80 |
| C | Sleeve Length | 58 | 60 | 64.5 | 67 | 69 | 69.5 | 70 | 70 |

Packing

| Sizes | | XXS | XS | S | M | L | XL | XXL | 3XL |
|-------|------------|-----|----|----|----|----|----|-----|-----|
| | Pieces/bag | 5 | 5 | 5 | 5 | 5 | 5 | 5 | 5 |
| | Pieces/box | 25 | 50 | 50 | 50 | 50 | 50 | 50 | 25 |