



WOMEN / ZIP-THRU SWEATSHIRTS  
**STELLA EDITOR**



STSW149

**The iconic women's zip-thru hoodie sweatshirt**

Brushed Sweatshirt

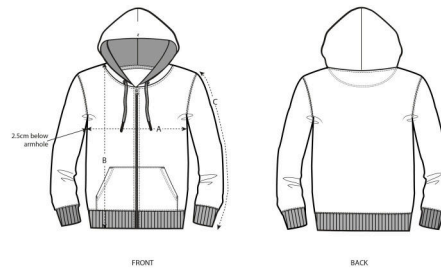
85% Organic ring-spun Combed Cotton, 15% Recycled Polyester  
350 GSM

- Set-in sleeve
- Double layered hood in self fabric
- Round drawcords in matching body colour with metal tipping
- Herringbone tape at inside back neck and at inside of zipper
- Metal zipper and eyelets
- Self fabric half moon at back neck
- Single needle topstitch at neckline
- 1x1 rib at sleeve hem and bottom hem
- Armhole, sleeve hem and bottom hem with twin needle topstitch.
- Kangaroo pocket with wide double topstitch

MEDIUM FIT

XS S M L XL XXL\*

Size guide



SIZES		XS	S	M	L	XL	XXL
A	Half Chest	44,5	47	50	53	56	59
B	Body Length	61	63	65	67	68	69
C	Sleeve Length	63,5	63,5	64,5	65	65,5	65,5

Combo options



Printing Specifications

Fits all kind of printing techniques. For more information, please visit our website.

Wash similar colours together, do not iron on print, wash and iron inside out.

