



## Das eng anliegende Damen-Tanktop

Enganliegende Passform

XS > XXL

180 GSM

### Einzelheiten

- Ärmellos
- 1x1 Ribpbündchen am Kragen und Armausschnitt
- Overlocknaht am hinteren Hals
- Doppelnadelsteppstich am Saum

### Composition

Shell - Singlejersey  
100% Cotton - Organic Carded - , 180.0 GSM  
Panel Washed

### Pflege

Wash similar colours together, no ironing on print, wash and iron inside out.



### Herkunftsland

Weaving : Bangladesh  
Dyeing : Bangladesh  
Assembly : Bangladesh



Organic  
Certified by Control Union  
CU 819434



2012163  
Centexbel  
www.oeko-tex.com



Whites



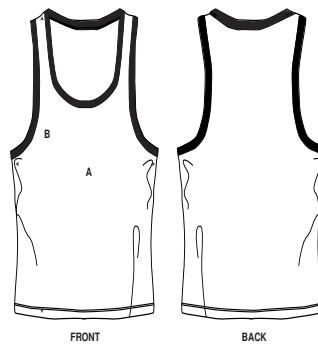
Colors



Essential Heathers



Größenführer



Sizes		XS	S	M	L	XL	XXL
A	Half Chest	33.5	36.5	39.5	42.5	45.5	49.5
B	Body Length	58	61	63	65	67	69

Verpackung

Sizes		XS	S	M	L	XL	XXL
	Pieces/bag	1	1	1	1	1	1
	Pieces/box	100	100	100	100	100	100